

West Michigan Academy of Arts and Academics

Spring Lake, Michigan

Audited Financial Statements

June 30, 2015

CONTENTS

	<u>Page</u>
Independent Auditor's Report	i - ii
Independent Auditor's Report on Internal Control over Financial Reporting and on Compliance and Other Matters Based on an Audit of Financial Statements Performed in Accordance with <i>Government Auditing Standards</i>	iii - iv
Management's Discussion and Analysis	v - x
Basic Financial Statements	
Statement of Net Position	1
Statement of Activities	2
Combined Balance Sheet – All Governmental Funds	3
Reconciliation of Total Governmental Fund Balance to Net Position of Governmental Activities	4
Statement of Revenues, Expenditures and Changes in Fund Balance – All Governmental Funds	5
Reconciliation of the Statement of Revenues, Expenditures and Changes in Fund Balance of Governmental Funds to the Statement of Activities	6
Statement of Fiduciary Net Position	7
Notes to Financial Statements	8 - 19
Supplemental Information	
Budgetary Comparison Schedule – General Fund	20
Schedule of Revenues – General Fund	21
Schedule of Expenditures – General Fund	22 - 24

INDEPENDENT AUDITOR'S REPORT

To the Board of Directors of West Michigan Academy of Arts and Academics

We have audited the accompanying financial statements of the governmental activities, each major fund, and the aggregate remaining fund information of West Michigan Academy of Arts and Academics, as of and for the year ended June 30, 2015, and the related notes to the financial statements, which collectively comprise West Michigan Academy of Arts and Academics' basic financial statements as listed in the table of contents.

Management's Responsibility for the Financial Statements

Management is responsible for the preparation and fair presentation of these financial statements in accordance with accounting principles generally accepted in the United States of America; this includes the design, implementation, and maintenance of internal control relevant to the preparation and fair presentation of financial statements that are free from material misstatement, whether due to fraud or error.

Auditor's Responsibility

Our responsibility is to express an opinion on these financial statements based on our audit. We conducted our audit in accordance with auditing standards generally accepted in the United States of America and the standards applicable to financial audits contained in *Government Auditing Standards*, issued by the Comptroller General of the United States. Those standards require that we plan and perform the audit to obtain reasonable assurance about whether the financial statements are free from material misstatement.

An audit involves performing procedures to obtain audit evidence about the amounts and disclosures in the financial statements. The procedures selected depend on the auditor's judgment, including the assessment of the risks of material misstatement of the financial statements, whether due to fraud or error. In making those risk assessments, the auditor considers internal control relevant to the entity's preparation and fair presentation of the financial statements in order to design audit procedures that are the appropriate in the circumstances, but not for the purpose of expressing an opinion on the effectiveness of the entity's internal control. Accordingly, we express no such opinion. An audit also includes evaluating the appropriateness of accounting policies used and the reasonableness of significant accounting estimates made by management, as well as evaluating the overall presentation of the financial statements.

We believe that the audit evidence we have obtained is sufficient and appropriate to provide a basis for our audit opinion.

Opinions

In our opinion, the financial statements referred to above present fairly, in all material respects, the respective financial position of governmental activities, each major fund, and the aggregate remaining fund information of West Michigan Academy of Arts and Academics, as of June 30, 2015, and the respective changes in financial position thereof for the year then ended in accordance with accounting principles generally accepted in the United States of America.

Other Matters

Required Supplementary Information

Accounting principles generally accepted in the United States of America require that the management's discussion and analysis and budgetary comparison information on pages v – x and 20 be presented to supplement the basic financial statements. Such information, although not a part of the basic financial statements, is required by the Governmental Accounting Standards Board, who considers it to be an essential part of financial reporting for placing the basic financial statements in an appropriate operational, economic, or historical context. We have applied certain limited procedures to the required supplementary information in accordance with auditing standards generally accepted in the United States of America, which consisted of inquiries of management about the methods of preparing the information and comparing the information for consistency with management's responses to our inquiries, the basic financial statements, and other knowledge we obtained during our audit of the basic financial statements. We do not express an opinion or provided any assurance on the information because the limited procedures do not provide us with sufficient evidence to express an opinion or provide any assurance.

Other Information

Our audit was conducted for the purpose of forming opinions on the financial statements that collectively comprise West Michigan Academy of Arts and Academics' basic financial statements. The introductory section, combining and individual non-major fund financial statements, statistical section, and schedules of revenues and expenditures are presented for purposes of additional analysis and are not a required part of the basic financial statements.

The combining and individual non-major fund financial statements and schedules of revenues and expenditures are the responsibility of management and were derived from and relate directly to the underlying accounting and other records used to prepare the basic financial statements. Such information has been subjected to the auditing procedures applied in the audit of the basic financial statements and certain additional procedures, including comparing and reconciling such information directly to the underlying accounting and other records used to prepare the basic financial statements or to the basic financial statements themselves, and other additional procedures in accordance with auditing standards generally accepted in the United States of America. In our opinion, the combining and individual non-major fund financial statements and schedules of revenues and expenditures are fairly stated, in all material respects, in relation to the basic financial statements as a whole.

The introductory and statistical sections have not been subjected to the auditing procedures applied in the audit of the basic financial statements and, accordingly, we do not express an opinion or provide any assurance on them.

Other Reporting Required by Government Auditing Standards

In accordance with *Government Auditing Standards*, we have also issued our report dated October 21, 2015, on our consideration of West Michigan Academy of Arts and Academics' internal control over financial reporting and on our tests of its compliance with certain provisions of laws, regulations, contracts and grant agreements and other matters. The purpose of that report is to describe the scope of our testing of internal control over financial reporting and compliance and the results of that testing, and not to provide an opinion on internal control over financial reporting or on compliance. That report is an integral part of an audit performed in accordance with *Government Auditing Standards* in considering West Michigan Academy of Arts and Academics' internal control over financial reporting and compliance.



Croskey Lanni, PC

INDEPENDENT AUDITOR'S REPORT ON INTERNAL CONTROL OVER FINANCIAL REPORTING AND ON COMPLIANCE AND OTHER MATTERS BASED ON AN AUDIT OF FINANCIAL STATEMENTS PERFORMED IN ACCORDANCE WITH *GOVERNMENT AUDITING STANDARDS*

**To the Board of Directors
of West Michigan Academy of Arts and Academics**

We have audited, in accordance with the auditing standards generally accepted in the United States of America and the standards applicable to financial audits contained in *Government Auditing Standards* issued by the Comptroller General of the United States, the financial statements of the governmental activities, each major fund, and the aggregate remaining fund information of West Michigan Academy of Arts and Academics, as of and for the year ended June 30, 2015, and the related notes to the financial statements, which collectively comprise West Michigan Academy of Arts and Academics' basic financial statements, and have issued our report thereon dated October 21, 2015.

Internal Control Over Financial Reporting

In planning and performing our audit of the financial statements, we considered West Michigan Academy of Arts and Academics' internal control over financial reporting (internal control) to determine the audit procedures that are appropriate in the circumstances for the purpose of expressing our opinions on the financial statements, but not for the purpose of expressing an opinion on the effectiveness of West Michigan Academy of Arts and Academics' internal control. Accordingly, we do not express an opinion on the effectiveness of West Michigan Academy of Arts and Academics' internal control.

A *deficiency in internal control* exists when the design or operation of a control does not allow management or employees, in the normal course of performing their assigned functions, to prevent, or detect and correct, misstatements on a timely basis. A *material weakness* is a deficiency, or a combination of deficiencies, in internal control, such that there is a reasonable possibility that a material misstatement of the entity's financial statements will not be prevented, or detected and corrected on a timely basis. A *significant deficiency* is a deficiency, or a combination of deficiencies, in internal control that is less severe than a material weakness, yet important enough to merit attention by those charged with governance.

Our consideration of internal control was for the limited purpose described in the first paragraph of this section and was not designed to identify all deficiencies in internal control that might be material weaknesses or, significant deficiencies. Given these limitations, during our audit we did not identify any deficiencies in internal control that we consider to be material weaknesses. However, material weaknesses may exist that have not been identified.

Compliance and Other Matters

As part of obtaining reasonable assurance about whether West Michigan Academy of Arts and Academics' financial statements are free from material misstatement, we performed tests of its compliance with certain provisions of laws, regulations, contracts and grant agreements, noncompliance with which could have a direct and material effect on the determination of financial statement amounts. However, providing an opinion on compliance with those provisions was not an objective of our audit, and accordingly, we do not express such an opinion. The results of our tests disclosed no instances of noncompliance or other matters that are required to be reported under *Government Auditing Standards*.

Purpose of this Report

The purpose of this report is solely to describe the scope of our testing of internal control and compliance and the results of that testing, and not to provide an opinion on the effectiveness of the entity's internal control or on compliance. This report is an integral part of an audit performed in accordance with *Government Auditing Standards* in considering the entity's internal control and compliance. Accordingly, this communication is not suitable for any other purpose.

A handwritten signature in blue ink that reads "Crosby Lanni, PC". The signature is written in a cursive style.

Croskey Lanni, PC

October 21, 2015
Rochester, Michigan

MANAGEMENT'S DISCUSSION AND ANALYSIS

This section of West Michigan Academy of Arts and Academic's, "WMAAA", annual financial report presents our discussion and analysis of the school's financial performance during the fiscal year that ended on June 30, 2015. Please read it in conjunction with the school's financial statements, which immediately follow this section.

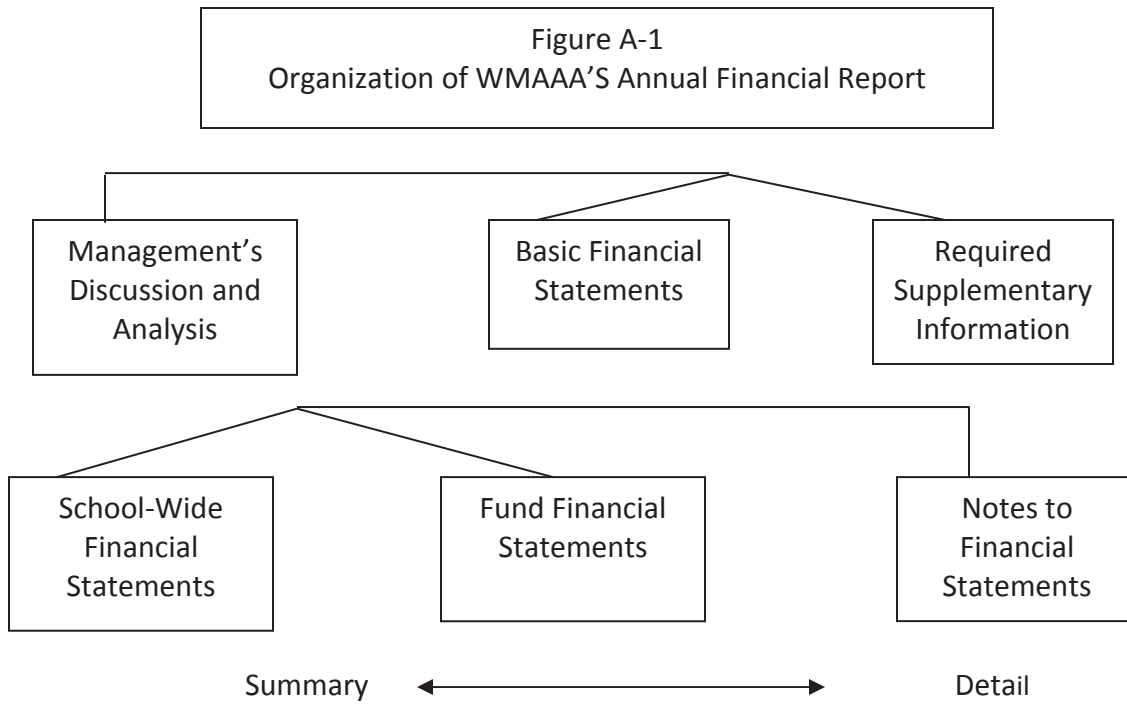
FINANCIAL HIGHLIGHTS

- ❖ The school's financial status remains stable.
 - The total cost of basic programs was \$1,848,008.
- ❖ Revenues were at \$3,957,074 while expenses were \$3,846,911.
 - Blended enrollment used for state aid purposes was 446.80 compared to 450.83 last year.
- ❖ The school reduced its outstanding long-term debt by \$126,613.
- ❖ The school has a positive fund balance in the General Fund of \$1,243,248.

OVERVIEW OF THE FINANCIAL STATEMENTS

This annual report consists of three parts – management's discussion and analysis (this section), the basic financial statements, and required supplementary information. The financial statements include two kinds of statements that present different views of the school:

- The first two statements are school-wide financial statements that provide both short-term and long-term information about the school's overall financial status.
- The remaining statements are fund financial statements that focus on individual parts of the school, reporting the schools operations in more detail.
- The governmental fund statements tell how basic services like regular and special education were financed.
- Fiduciary funds statements provide information about the financial relationships in which the school acts solely as a trustee or agent for the benefit of others. These consist of student activity funds held by the school on behalf of the student group.



The financial statements also include notes that explain some of the information in the statements and provide more detailed data. The statements are followed by a section of required supplementary information that further explains and supports the financial statements with a comparison of the school's budget for the year. Figure A-1 shows how the various parts of this annual report are arranged and related to one another.

Figure A-2
Major Features of School-Wide and Fund Financial

Fund Financial Statements

	School-Wide Statements	Government Funds	Fiduciary Funds
Scope	Entire school (except fiduciary funds)	The activities of the school that are not proprietary or fiduciary, such as special education and building maintenance.	Instances in which the school administers resources on behalf of someone else, such as scholarship programs and student activities monies
Required Financial Statements	*Statement of net position *Statement of activities	*Balance sheet *Statement of revenues expenditures and changes in fund balances	*Statement of fiduciary net position *Statement of changes in fiduciary net position
Accounting basis and measurement focus	Accrual accounting and economic resources focus	Modified accrual accounting and current financial resources	Accrual accounting and economic resources focus
Type of asset/liability information	All assets and liabilities both financial and capital, short-term and long-term	Generally assets expected to be used up and liabilities that come due during the year or soon thereafter, no capital assets or long-term liabilities included	All assets and liabilities, both short-term and long-term
Type of inflow/outflow information	All revenues and expenses during year, regardless of when cash is received or paid	Revenues for which cash is received during or soon after the end of the year, expenditures when good or services have been received and the related liability is due and payable	All additions and deductions during the year, regardless of when cash is received or paid

Figure A-2 summarizes the major features of the school's financial statements, including the portion of the schools activities they cover and the types of information they contain. The remainder of this overview section of management's discussion and analysis highlights the structure and contents of each of the statements.

SCHOOL-WIDE STATEMENTS

The school-wide statements report information about the school as a whole using accounting methods similar to those used by private-sector companies. The statement of net position includes all of the school's assets and liabilities. All of the current year's revenues and expenses are accounted for in the statement of activities regardless of when cash is received or paid.

The two school-wide statements report the school's net position and how they have changed. Net position – the difference between the school's assets and liabilities – are one way to measure the school's financial health or position.

- ❖ Over time, increases or decreases in the school's net position are an indicator of whether its financial position is improving or deteriorating, respectively.
- ❖ To assess the overall health of the school, you need to consider additional non-financial factors such as changes in the school's enrollment and the condition of school buildings and other facilities.

FUND FINANCIAL STATEMENTS

The fund financial statements provide more detailed information about the school's funds, focusing on its most significant or "major" funds – not the school as a whole. Funds are accounting devices the school uses to keep track of specific sources of funding and spending on particular programs:

- ❖ *Governmental activities* – Most of the school's basic services are included in the general fund, such as regular and special education and administration. State foundation aid finances most of these activities.
- ❖ The school establishes other funds to control and manage money for particular purposes (like repaying its long-term debts) or to show that it is properly using certain revenues.

The school has two kinds of funds:

- ❖ *Governmental funds* – Most of the school's basic services are included in governmental funds, which generally focus on (1) how cash and other financial assets that can readily be converted to cash flow in and out and (2) the balances left at year-end that are available for spending. Consequently, the governmental funds statements provide a detailed short-term view that helps you determine whether there are more or fewer financial resources that can be spent in the near future to finance the school's programs. Because this information does not encompass the additional long-term focus of the school-wide statements, we provide additional information with governmental funds statements that explain the relationship (or differences) between them.
- ❖ *Fiduciary funds* – The school is responsible for ensuring that the assets reported in these funds are used only for their intended purposes and by those to whom the assets belong. We exclude these activities from the school-wide financial statements because the school cannot use these assets to finance its operations.

FINANCIAL ANALYSIS OF THE SCHOOL AS A WHOLE

The comparison of current year to prior year financial information is on the following pages. See tables A-3, A-4, and A-5.

The school's financial position is the product of many factors. The asset depreciation schedule was implemented as required by GASB 34. New asset purchases have been kept to a minimum.

School Governmental

The stability of the school's finances is a result of the following measures:

- ❖ A strong fund balance has allowed the Academy to add onto its facility to accommodate the steady student growth.
- ❖ Capital outlay spending for equipment has been kept to a minimum.
- ❖ Continuous budget review.

General Fund Budgetary Analysis

Over the course of the year, the school reviewed the annual operating budget two times. The following operational changes were made:

- ❖ Changes were made during the year to account for initial and final enrollment counts, state aid indecisions, capital outlay improvements, and changes in assumptions since the original budget was adopted.

Financial Outlook

WMAAA's financial forecast is cautiously optimistic heading into the 2015-2016 school year.

- ❖ Enrollment remains good and continues to grow. As a result, more classrooms and facility space will need to be added in the near future. The Academy has and will continue to work toward raising funds for such projects.
- ❖ The completion of land and building expansion, which includes a new Performing Arts Center and classrooms.

Table A-3
WMAAA's Net Position

	<u>2015</u>	<u>2014</u>
Current and other assets	\$ 1,957,844	\$ 2,538,175
Capital assets	<u>6,002,845</u>	<u>5,174,750</u>
Total assets and deferred outflows	7,960,689	7,712,925
Long-term debt outstanding	4,953,378	4,775,306
Other liabilities	<u>342,226</u>	<u>382,697</u>
Total liabilities	5,295,604	5,158,003
Net position:		
Restricted	1,485,025	834,063
Unrestricted	<u>1,180,060</u>	<u>1,720,859</u>
Total net position	<u>\$ 2,665,085</u>	<u>\$ 2,554,922</u>

Table A-4
Changes in WMAAA's Net Position

	<u>2015</u>	<u>2014</u>
Revenues:		
Program revenues:		
Charges for services	\$ 68,208	\$ 112,991
Federal and state operating grants	567,769	432,697
General revenues:		
State aid – unrestricted	3,242,006	3,246,181
Miscellaneous	79,091	53,120
Total revenues	<u>3,957,074</u>	<u>3,844,989</u>
Expenses:		
Instruction	2,109,126	2,088,648
Support services	1,295,729	1,267,035
Interest on long-term debt	268,092	256,761
Depreciation	173,964	142,432
Total expenses	<u>3,846,911</u>	<u>3,754,876</u>
Change in net position	<u>\$ 110,163</u>	<u>\$ 90,113</u>

CAPITAL ASSET AND DEBT ADMINISTRATION

Capital Assets

By the end of 2015, the school had invested \$7,431,524 in capital assets, including land, building and improvements and equipment. See table A-5 below for a listing of capital assets, and accumulated depreciation.

Table A-5
WMAAA's Capital Assets

	<u>Balance</u> <u>June 30, 2015</u>	<u>Balance</u> <u>June 30, 2014</u>
Land	\$ 40,000	\$ 40,000
Building and improvements	7,176,431	6,174,372
Equipment and computers	215,093	215,093
Sub-total	<u>7,431,524</u>	<u>6,429,465</u>
Less: accumulated depreciation	<u>1,428,679</u>	<u>1,254,715</u>
Net book value of assets	<u>\$ 6,002,845</u>	<u>\$ 5,174,750</u>

Long-Term Debt

At year end the school had debt of \$5,083,387 consisting of a Revenue bond and facilities loan further described in Note 7 to the financial statements.

- The school continued to pay down its debt, retiring \$126,613.

FACTORS BEARING ON THE SCHOOL'S FUTURE

- Continuation of positive enrollment trends.
- Facility expansion to accommodate student growth.

CONTACTING THE SCHOOL'S FINANCIAL MANAGEMENT

This financial report is designed to provide our students, parents and creditors with a general overview of the school's finances and to demonstrate the school's accountability for the money it receives. If you have questions about this report or need additional information, contact the school's office at:

West Michigan Academy of Arts & Academics, 17350 Hazel Street, Spring Lake, MI 49456

WEST MICHIGAN ACADEMY OF ARTS AND ACADEMICS

STATEMENT OF NET POSITION
JUNE 30, 2015
See Independent Auditor's Report

ASSETS AND DEFERRED OUTFLOWS

Current Assets

Cash and cash equivalents	\$	745,776
Investments in debt service and capital projects		435,558
Accounts receivable		390
Due from other governmental units		770,671
Prepaid expenses		5,449
		<hr/>
Total current assets		1,957,844

Capital Assets - Net of Accumulated Depreciation

6,002,845

Total assets and deferred outflows

\$ 7,960,689

LIABILITIES, DEFERRED INFLOWS AND NET POSITION

Current Liabilities

Accounts payable	\$	17,792
Unearned revenue		600
Other accrued expenses		323,834
Long-term debt - current portion		138,010
		<hr/>
Total current liabilities		480,236

Long-Term Debt - Long-Term Portion

4,815,368

Net Position

Net investment in capital assets		1,049,467
Restricted for debt services and capital projects		435,558
Unrestricted		1,180,060
		<hr/>
Total net position		2,665,085
		<hr/>
Total liabilities, deferred inflows and net position	\$	<u>7,960,689</u>

See accompanying notes to financial statements

WEST MICHIGAN ACADEMY OF ARTS AND ACADEMICS

STATEMENT OF ACTIVITIES
FOR THE YEAR ENDED JUNE 30, 2015
See Independent Auditor's Report

		Program Revenues		Net (Expense) Revenues and Changes in Net Assets
	Expenses	Charges for Services	Operating Grants	Government Type Activities
Functions				
Instruction				
Basic programs	\$ 1,848,008	\$ -	\$ 147,194	\$ (1,700,814)
Added needs	261,118	-	254,732	(6,386)
Support services				
Pupil support services	149,854	-	149,854	-
Instructional staff support services	53,657	-	2,999	(50,658)
General administration	226,817	-	-	(226,817)
School administration	497,814	-	11,259	(486,555)
Business support services	28,372	-	-	(28,372)
Operations and maintenance	253,053	-	-	(253,053)
Pupil transportation services	20,496	-	-	(20,496)
Central support services	1,731	-	1,731	-
Community services	63,935	67,445	-	3,510
Unallocated depreciation	173,964	-	-	(173,964)
Unallocated interest	268,092	763	-	(267,329)
Total primary government	\$ 3,846,911	\$ 68,208	\$ 567,769	(3,210,934)
General Purpose Revenues				
State school aid - unrestricted				3,242,006
Miscellaneous revenues				79,091
Total general purpose revenues				3,321,097
Change in net position				110,163
Net position - July 1, 2014				2,554,922
Net position - June 30, 2015				\$ 2,665,085

See accompanying notes to financial statements

WEST MICHIGAN ACADEMY OF ARTS AND ACADEMICS

COMBINED BALANCE SHEET – ALL GOVERNMENTAL FUNDS

JUNE 30, 2015

See Independent Auditor’s Report

ASSETS

	<u>General</u>	<u>Debt Service</u>	<u>Total</u>
Cash and cash equivalents	\$ 745,776	\$ -	\$ 745,776
Investments	-	435,558	435,558
Accounts receivable	390	-	390
Due from other governmental units	770,671	-	770,671
Prepaid expenses	<u>5,449</u>	<u>-</u>	<u>5,449</u>
 Total assets	 <u>\$ 1,522,286</u>	 <u>\$ 435,558</u>	 <u>\$ 1,957,844</u>

LIABILITIES AND FUND BALANCE

Liabilities

Accounts payable	\$ 17,792	\$ -	\$ 17,792
Unearned revenue	600	-	600
Other accrued expenses	<u>260,646</u>	<u>-</u>	<u>260,646</u>
 Total liabilities	 279,038	 -	 279,038

Fund Balance

Nonspendable	5,449	-	5,449
Restricted	-	435,558	435,558
Unassigned	<u>1,237,799</u>	<u>-</u>	<u>1,237,799</u>
 Total fund balance	 <u>1,243,248</u>	 <u>435,558</u>	 <u>1,678,806</u>
 Total liabilities and fund balance	 <u>\$ 1,522,286</u>	 <u>\$ 435,558</u>	 <u>\$ 1,957,844</u>

See accompanying notes to financial statements

WEST MICHIGAN ACADEMY OF ARTS AND ACADEMICS

RECONCILIATION OF TOTAL GOVERNMENTAL FUND BALANCE TO NET POSITION OF GOVERNMENTAL ACTIVITIES

JUNE 30, 2015

See Independent Auditor's Report

Amounts reported for governmental activities in the statement of net position are different because:

Total Governmental Fund Balances	\$ 1,678,806
Capital assets used in governmental activities are not financial resources and, therefore, are not reported in the funds. The cost of the assets is \$7,431,524 and the accumulated depreciation is \$1,428,679.	6,002,845
Interest is not payable until due in governmental activities and, therefore, is not recorded in the funds.	(63,188)
Long-term liabilities are not due and payable in the current period and, therefore, are not reported in the funds.	<u>(4,953,378)</u>
Net Position of Governmental Activities	<u><u>\$ 2,665,085</u></u>

See accompanying notes to financial statements

WEST MICHIGAN ACADEMY OF ARTS AND ACADEMICS

STATEMENT OF REVENUES, EXPENDITURES
AND CHANGES IN FUND BALANCE – ALL GOVERNMENTAL FUNDS
FOR THE YEAR ENDED JUNE 30, 2015
See Independent Auditor's Report

	General	Debt Service	Non-Major Capital Projects	Total
Revenues				
Local sources	\$ 158,508	\$ 27	\$ 2	\$ 158,537
State sources	3,369,999	-	-	3,369,999
Federal sources	131,469	-	-	131,469
Interdistrict sources	297,069	-	-	297,069
Total governmental fund revenues	3,957,045	27	2	3,957,074
Expenditures				
Instruction				
Basic program	1,848,008	-	-	1,848,008
Added needs	261,118	-	-	261,118
Support services				
Pupil support services	149,854	-	-	149,854
Instructional staff support services	53,657	-	-	53,657
General administration	226,817	-	-	226,817
School administration	497,814	-	-	497,814
Business support services	26,622	1,750	-	28,372
Operations and maintenance	253,053	-	-	253,053
Pupil transportation services	20,496	-	-	20,496
Central support services	1,731	-	-	1,731
Community services	63,935	-	-	63,935
Capital outlay	1,002,059	-	-	1,002,059
Debt principal and interest	54,495	336,450	-	390,945
Total governmental fund expenditures	4,459,659	338,200	-	4,797,859
Excess (deficiency) of revenues over expenditures	(502,614)	(338,173)	2	(840,785)
Other Financing Sources (Uses)				
Proceeds from long-term debt	300,000	-	-	300,000
Operating transfers in	-	339,114	-	339,114
Operating transfers out	(337,365)	-	(1,749)	(339,114)
Total other financing sources (uses)	(37,365)	339,114	(1,749)	300,000
Excess (deficiency) of revenues and other financing sources over expenditures and other uses	(539,979)	941	(1,747)	(540,785)
Fund balance - July 1, 2014	1,783,227	434,617	1,747	2,219,591
Fund balance - June 30, 2015	\$ 1,243,248	\$ 435,558	\$ -	\$ 1,678,806

See accompanying notes to financial statements

WEST MICHIGAN ACADEMY OF ARTS AND ACADEMICS

RECONCILIATION OF THE STATEMENT OF REVENUES, EXPENDITURES AND CHANGES IN
FUND BALANCE OF GOVERNMENTAL FUNDS TO THE STATEMENT OF ACTIVITIES
FOR THE YEAR ENDED JUNE 30, 2015
See Independent Auditor's Report

Amounts reported for governmental activities in the statement of activities are different because:

Net Change in Fund Balances - Total Governmental Funds \$ (540,785)

Governmental funds report capital outlays as expenditures. However, in the statement of activities, assets are capitalized and the cost is allocated over their estimated useful lives and reported as depreciation and amortization expense. This is the amount by which capital outlays exceeded depreciation and amortization in the current period

Capital outlay	\$ 1,002,059	
Depreciation and amortization expense	<u>(173,964)</u>	828,095

The governmental funds report loan proceeds as an other financing source, while repayment of loan principal is reported as an expenditure. Interest is recognized as an expenditure in the governmental funds when it is due. The net effect of these differences in the treatment of general loan obligations is as follows:

Proceeds from long-term debt	\$ (300,000)	
Repayment of loan principal	126,613	
Interest expense	<u>(3,760)</u>	<u>(177,147)</u>

Change in Net Position of Governmental Activities \$ 110,163

See accompanying notes to financial statements

WEST MICHIGAN ACADEMY OF ARTS AND ACADEMICS

STATEMENT OF FIDUCIARY NET POSITION

FIDUCIARY FUND

JUNE 30, 2015

See Independent Auditor's Report

ASSETS

Cash and cash equivalents	<u>\$ 28,573</u>
Total assets	<u><u>\$ 28,573</u></u>

LIABILITIES

Due to student groups	<u>\$ 28,573</u>
Total liabilities	<u><u>\$ 28,573</u></u>

See accompanying notes to financial statements

WEST MICHIGAN ACADEMY OF ARTS AND ACADEMICS

NOTES TO FINANCIAL STATEMENTS
FOR THE YEAR ENDED JUNE 30, 2015
See Independent Auditor's Report

NOTE 1 – SUMMARY OF SIGNIFICANT ACCOUNTING POLICIES

The accounting policies of West Michigan Academy of Arts and Academics (the "Academy") conform to generally accepted accounting principles applicable to public school academies. The following is a summary of the significant accounting policies:

Reporting Entity

West Michigan Academy of Arts and Academics was formed as a public school academy pursuant to the Michigan School Code of 1976, as amended by Act No. 362 of the Public Acts of 1993 and Act No. 416 of the Public Acts of 1994. The Academy filed articles of incorporation as a nonprofit corporation pursuant to the provisions of the Michigan Nonprofit Corporation Act of 1982, as amended, on June 5, 1996, and began operation in July 1996.

In November 2007, the Academy entered into a seven-year contract with Grand Valley State University's Board of Trustees to charter a public school academy. The contract has been subsequently renewed through June 30, 2022. The contract requires the Academy to act exclusively as a governmental agency and not undertake any action inconsistent with its status as an entity authorized to receive state school aid funds pursuant to the State constitution. The University's Board of Trustees is the fiscal agent for the Academy and is responsible for overseeing the Academy's compliance with the contract and all applicable laws. The Academy pays Grand Valley State University's Board of Trustees three percent of State aid as administrative fees. Total administrative fees paid for the year ended June 30, 2015 were approximately \$95,300.

The Academy entered into an agreement with HR Educational Services, LLC, "HRES" through June 30, 2017. Under the terms of this agreement, HRES will provide a variety of services including payroll, and human resource services. Accounting services will continue to be provided by Advance Accounting Services, Inc. The Academy is obligated to pay HRES 3.7 percent of its gross pay for payroll services, and Advance Accounting Services, Inc. \$1,250 monthly for accounting services. The total paid for these services amounted to approximately \$69,600 for the year ended June 30, 2015.

The accompanying financial statements have been prepared in accordance with criteria established by the Governmental Accounting Standards Board for determining the various governmental organizations to be included in the reporting entity. These criteria include significant operational or financial relationships with the public school Academy. Based on application of criteria, the Academy does not contain component units.

Fund Financial Statements

Fund financial statements report detailed information about the Academy. The focus of governmental fund financial statements is on major funds rather than reporting funds by type. Each major fund is presented in a separate column. Non-major funds are aggregated and presented in a single column.

WEST MICHIGAN ACADEMY OF ARTS AND ACADEMICS

NOTES TO FINANCIAL STATEMENTS - Continued
FOR THE YEAR ENDED JUNE 30, 2015
See Independent Auditor's Report

NOTE 1 - SUMMARY OF SIGNIFICANT ACCOUNTING POLICIES - Continued

Basis of Presentation – Fund Accounting

The accounts of the Academy are organized on the basis of funds. The operations of a fund are accounted for with a separate set of self-balancing accounts that comprise its assets, liabilities, fund balance, revenue and expenditures. Government resources are allocated to and accounted for in individual funds based on the purposes for which they are to be spent and the means by which spending activities are controlled. The various funds are grouped, in the combined financial statements in this report, into generic fund types in two broad fund categories.

Governmental Funds

A governmental fund is a fund through which most academy functions typically are financed. The acquisition, use and balances of the Academy's expendable financial resources and the related current liabilities are accounted for through a governmental fund.

General Fund - The general fund is used to record the general operations of the Academy pertaining to education and those operations not provided for in other funds. Included are all transactions related to the approved current operating budget.

Special Revenue Fund - The special revenue fund, which the Academy does not currently maintain, is used to account for the food service program operations. The special revenue fund is a subsidiary operation and is an obligation of the general fund. Therefore any shortfall in the special revenue fund will be covered by an operating transfer from the general fund. The special revenue fund does not maintain its own assets and liabilities; accordingly, no balance sheet is presented for this fund.

Debt Service Fund - The debt service fund, is used to record certain revenue and the payment of interest, principal and other expenditures on long-term debt.

Capital Projects Fund - The capital projects fund, accounts for financial resources to be used for the acquisition, construction, or improvement of capital facilities.

Fiduciary Fund - The fiduciary fund is used to account for assets held by the Academy in a trustee capacity or as an agent. The agency fund is custodial in nature and does not involve the measurement of results of operations.

Activity (Agency) Fund - The Academy presently maintains an activity fund to record the transactions of a student group for school and school-related purposes. The fund is segregated and held in trust for the students.

Governmental and agency funds utilize the modified accrual basis of accounting. Modifications in such method from the accrual basis are as follows:

WEST MICHIGAN ACADEMY OF ARTS AND ACADEMICS

NOTES TO FINANCIAL STATEMENTS - Continued
FOR THE YEAR ENDED JUNE 30, 2015
See Independent Auditor's Report

NOTE 1 - SUMMARY OF SIGNIFICANT ACCOUNTING POLICIES – Continued

- a. Revenue that is both measurable and available for use to finance operations is recorded as revenue when earned. Revenues are considered to be available when they are collectible within the current period or soon enough thereafter to pay liabilities of the current period. For this purpose, the Academy considers revenues to be available if they are collected within sixty days of the end of the current fiscal period.
- b. Payments for inventorable types of supplies, which are not significant at year end, are recorded as expenditures at the time of purchase.
- c. Principal and interest of general long-term debt are not recorded as expenditures until their due dates.
- d. The State of Michigan utilizes a foundation allowance funding approach, which provides for specific annual amount of revenue per student based on a state-wide formula. The foundation allowance is funded from a combination of state and local sources. Revenue from state sources is primarily governed by the School Aid Act and the School Code of Michigan. The state portion of the foundation is provided from the State's School Aid Fund and is recognized as revenue in accordance with state law. A major portion of the Academy's revenue is derived from this state aid. As such, the Academy is considered to be economically dependent on this aid. The Academy's existence is dependent upon qualification for such aid.

Government-Wide Financial Statements

The government-wide financial statements (i.e. the statement of Net Position and the Statement of Activities) report information on all of the non-fiduciary activities of the primary government. The government-wide financial statements are prepared using the economic resources measurement focus and the accrual basis of accounting. This approach differs from the manner in which governmental fund financial statements are prepared. Therefore, governmental fund financial statements include reconciliations with brief explanations to better identify the relationships between the government-wide statements and the statements for governmental funds.

The government-wide Statement of Activities presents a comparison between expenses and program revenues for each segment of the business-type activities of the Academy and for each governmental program. Direct expenses are those that are specifically associated with a service, program or department and are therefore clearly identifiable to a particular function. The Academy does not allocate indirect expenses to programs. Program revenues include charges paid by the recipients of the goods or services offered by the programs and grants and contributions that are restricted to meeting the operational or capital requirements of a particular program. Revenues not classified as program revenues are presented as general revenues. The comparison of program revenues and expenses identifies the extent to which each program or function is self financing or draws from the general revenues of the Academy. When both restricted and unrestricted resources are available for use, it is the Academy's policy to use restricted resources first.

WEST MICHIGAN ACADEMY OF ARTS AND ACADEMICS

NOTES TO FINANCIAL STATEMENTS - Continued
FOR THE YEAR ENDED JUNE 30, 2015
See Independent Auditor's Report

NOTE 1 - SUMMARY OF SIGNIFICANT ACCOUNTING POLICIES - Continued

Net position should be reported as restricted when constraints placed on net position's use is either externally imposed by creditors, grantors, contributors, or laws or regulations of other governments or imposed by law through constitutional provisions or enabling legislation. The Academy first utilizes restricted resources to finance qualifying activities.

Separate financial statements are provided for governmental funds and fiduciary funds, even though the latter are excluded from the government - wide financial statements.

Cash and Cash Equivalents

The Academy's cash and cash equivalents are considered to be cash on hand, demand deposits and short-term investments with maturities of three months or less from the date of acquisition. The Academy reports its investments in accordance with GASB Statement No. 31, Accounting and Financial Reporting for Certain Investments and for External Investment Pools and GASB No. 40, Deposit and Investment Risk Disclosures. Under these standards, certain investments are valued at fair value as determined by quoted market prices or by estimated fair values when quoted market prices are not available. The standards also provide that certain investments are valued at cost (or amortized cost) when they are of a short-term duration, the rate of return is fixed, and the Academy intends to hold the investment until maturity. State statutes authorize the Academy to invest in bonds and other direct and certain indirect obligations of the U.S. Treasury; certificates of deposit, saving accounts, deposit accounts, and or depository receipts of a bank, savings and loan association, or credit union, which is a member of the Federal Deposit Insurance Corporation, Federal Savings and Loan Corporation or National Credit Union Administration, respectively; in commercial paper rated at the time of purchase within the three highest classifications established by not less than two standard rating services and which matures not more than 270 days after the date of purchase. The Academy is also authorized to invest in U.S. Government or Federal agency obligation repurchase agreements, bankers' acceptances of U.S. banks, and mutual funds composed of investments as outlined above.

Receivables

Receivables at June 30, 2015 consist primarily of state school aid due from the State of Michigan and the federal government. All receivables are expected to be fully collected in July and August of 2015 and are considered current for the purposes of these financial statements.

Prepaid Assets

Payments made to vendors for services that will benefit periods beyond June 30, 2015, are recorded as prepaid items using the consumption method. A current asset for the prepaid amount is recorded at the time of the purchase and an expenditure is reported in the year in which services are consumed.

WEST MICHIGAN ACADEMY OF ARTS AND ACADEMICS

NOTES TO FINANCIAL STATEMENTS - Continued
FOR THE YEAR ENDED JUNE 30, 2015
See Independent Auditor's Report

NOTE 1 - SUMMARY OF SIGNIFICANT ACCOUNTING POLICIES - Continued

Capital Assets and Depreciation

All capital assets are capitalized at cost (or estimated historical cost) and updated for additions or retirements during the year. The Academy follows the policy of not capitalizing assets with a useful life of less than one year. The Academy does not possess any infrastructure assets.

All reported capital assets, with the exception of land, are depreciated. Improvements are depreciated over the remaining useful lives of the related capital assets. Depreciation is computed using the straight-line method over the following useful lives:

Building and improvements	10 – 50 years
Furniture and equipment	5 – 15 years
Computers and software	3 – 10 years

Accrued Liabilities and Long-Term Obligations

All payables, accrued liabilities and long-term obligations are reported in the government-wide financial statements. In general, payables and accrued liabilities that will be paid from governmental funds are reported on the governmental fund financial statements regardless of whether they will be liquidated with current resources. However, the non-current portion of capital leases that will be paid from governmental funds are reported as a liability in the fund financial statements only to the extent that they will be paid with current, expendable, available financial resources. In general, payments made within sixty days after year-end are considered to have been made with current available financial resources. Other long-term obligations that will be paid from governmental funds are not recognized as a liability in the fund financial statements until due.

Net Position

Net position represents the difference between assets, deferred outflows and liabilities and deferred inflows. Net position is reported as restricted when there are limitations imposed on their use either through the enabling legislation adopted by the Academy or through external restrictions imposed by creditors, grantors or laws of regulations of other governments.

Fund Equity

The Academy has adopted GASB 54 as part of its fiscal year reporting. The intention of the GASB is to provide a more structured classification of fund balance and to improve the usefulness of fund balance reporting to the users of the Academy's financial statements. The reporting standard establishes a hierarchy for fund balance classifications and the constraints imposed on those resources.

WEST MICHIGAN ACADEMY OF ARTS AND ACADEMICS

NOTES TO FINANCIAL STATEMENTS - Continued
FOR THE YEAR ENDED JUNE 30, 2015
See Independent Auditor's Report

NOTE 1 - SUMMARY OF SIGNIFICANT ACCOUNTING POLICIES - Continued

GASB 54 provides for two major types of fund balances, which are nonspendable and spendable. Nonspendable fund balances are balances that cannot be spent because they are not expected to be converted to cash or they are legally or contractually required to remain intact. This category typically includes prepaid items and inventories.

In addition to nonspendable fund balance, GASB 54 has provided a hierarchy of spendable fund balances, based on a hierarchy of spending constraints.

- a. *Restricted fund balance* – amounts constrained to specific purposes by their providers (such as grantors, bondholders, and higher levels of government), through constitutional provisions, or by enabling legislation.
- b. *Committed fund balance* – amounts constrained to specific purposes by the Board; to be reported as committed, amounts cannot be used for any other purpose unless the Board takes action to remove or change the constraint.
- c. *Assigned fund balance* – amounts the Board intends to use for a specific purpose; intent can be expressed by the Board or by an official or committee to which the Board delegates the authority.
- d. *Unassigned fund balance* – amounts that are available for any purpose; these amounts are reported only in the general fund.

The Academy follows the policy that restricted, committed, or assigned amounts will be considered to have been spent when an expenditure is incurred for purposes for which both unassigned and restricted, committed, or assigned fund balances are available.

Estimates

The preparation of financial statements in conformity with accounting principles generally accepted in the United States of America requires management to make estimates and assumptions that affect the amounts reported in the financial statements and accompanying notes. Actual results may differ from those estimates.

WEST MICHIGAN ACADEMY OF ARTS AND ACADEMICS

NOTES TO FINANCIAL STATEMENTS - Continued
 FOR THE YEAR ENDED JUNE 30, 2015
 See Independent Auditor's Report

NOTE 2 - STEWARDSHIP, COMPLIANCE AND ACCOUNTABILITY

Annual budgets are adopted on a consistent basis with accounting principles generally accepted in the United States of America and state law for the general fund. All annual appropriations lapse at fiscal year end and encumbrances are not formally recorded.

The budget document presents information by fund and function. The legal level of budgetary control adopted by the governing body is the function level. State law requires the Academy to have its budget in place by July 1. Expenditures in excess of amounts budgeted is a violation of Michigan Law. The Academy is required by law to adopt general and special revenue fund budgets. During the year ended June 30, 2015 the budget was amended in a legally permissible manner. A comparison of expenditures to amounts appropriated is contained on page 20 of these financial statements.

NOTE 3 - DEPOSITS AND INVESTMENTS

As of June 30, 2015, the Academy had the following investments:

Type	S&P Rating	Maturities	Carrying Value
Deposits:			
Demand deposits			\$ 774,349
Investments:			
U.S. Treasury and agency obligations	AAAm	Various	<u>435,558</u>
Total deposits and investments			<u>\$ 1,209,907</u>

The above amounts are reported in the financial statements as follows:

Deposits:			
Cash - Academy Wide			\$ 745,776
Cash - Fiduciary Fund			<u>28,573</u>
Subtotal			774,349
Investments:			
Investments - Debt Service			<u>435,558</u>
Total deposits and investments			<u>\$ 1,209,907</u>

WEST MICHIGAN ACADEMY OF ARTS AND ACADEMICS

NOTES TO FINANCIAL STATEMENTS - Continued
FOR THE YEAR ENDED JUNE 30, 2015
See Independent Auditor's Report

NOTE 3 - DEPOSITS AND INVESTMENTS - Continued

Interest Rate Risk

In accordance with its investment policy, the Academy will minimize interest rate risk, which is the risk that the market value of securities in the portfolio will fall due to changes in market interest rates, by; structuring the investment portfolio so that securities mature to meet cash requirements for ongoing operations, thereby avoiding the need to sell securities in the open market; and, investing operating funds primarily in shorter-term securities, liquid asset funds, money market mutual funds, or similar investment pools and limiting the average maturity in accordance with the Academy's cash requirements.

Credit Risk

State law limits investments in commercial paper and corporate bonds to a prime or better rating issued by nationally recognized statistical rating organizations (NRSROs). As of June 30, 2015, Academy's investments were rated AAAm by Standards & Poor's and Aaa by Moody's Investors Service.

Concentration of Credit Risk

The Academy will minimize concentration of credit risk, which is the risk of loss attributed to the magnitude of the Academy's investment in a single issuer, by diversifying the investment portfolio so that the impact of potential losses from any one type of security or issuer will be minimized. More than 5% of the Academy's investments are in pooled investment accounts which represents 100% of the Academy's total investments.

Custodial Credit Risk - Deposits

In the case of deposits, this is the risk that in the event of a bank failure, the Academy's deposits may not be returned to it. As of June 30, 2015, \$538,148 of the Academy's cash was exposed to custodial credit risk because it was uninsured. All cash balances were uncollateralized as of June 30, 2015.

Custodial Credit Risk - Investments

For an investment, this is the risk that, in the event of the failure of the counterparty, the Academy will not be able to recover the value of its investments or collateral securities that are in the possession of an outside party.

The Academy will minimize custodial credit risk, which is the risk of loss due to the failure of the security issuer or backer, by; limiting investments to the types of securities allowed by law; and pre-qualifying the financial institutions, broker/dealers, intermediaries and advisors with which the Academy will do business.

Foreign Currency Risk

The Academy is not authorized to invest in investments which have this type of risk.

WEST MICHIGAN ACADEMY OF ARTS AND ACADEMICS

NOTES TO FINANCIAL STATEMENTS - Continued
 FOR THE YEAR ENDED JUNE 30, 2015
 See Independent Auditor's Report

NOTE 4 - DUE FROM OTHER GOVERNMENTAL UNITS

Amounts due from other governmental units consist of the following:

Local sources	\$	99,202
State sources		615,176
Federal sources		<u>56,293</u>
Total	<u>\$</u>	<u>770,671</u>

NOTE 5 - CAPITAL ASSETS

Capital asset activity of the Academy's governmental activities was as follows:

	<u>Balance</u> <u>July 1, 2014</u>	<u>Additions</u>	<u>Disposals</u>	<u>Balance</u> <u>June 30, 2015</u>
Capital assets not subject to depreciation				
Land	\$ 40,000	\$ -	\$ -	\$ 40,000
Capital assets subject to depreciation				
Building	6,018,395	-	-	6,018,395
Improvements	155,977	1,002,059	-	1,158,036
Equipment	143,757	-	-	143,757
Computer	<u>71,336</u>	<u>-</u>	<u>-</u>	<u>71,336</u>
Sub-total	6,429,465	1,002,059	-	7,431,524
Accumulated depreciation				
Building	1,106,699	150,900	-	1,257,599
Improvements	15,213	4,970	-	20,183
Equipment	72,856	13,627	-	86,483
Computer	<u>59,947</u>	<u>4,467</u>	<u>-</u>	<u>64,414</u>
Sub-total	<u>1,254,715</u>	<u>173,964</u>	<u>-</u>	<u>1,428,679</u>
Total net capital assets	<u>\$ 5,174,750</u>	<u>\$ 828,095</u>	<u>\$ -</u>	<u>\$ 6,002,845</u>

Depreciation and amortization expense was not charged to activities as the Academy considers its assets to impact multiple activities and allocation is not practical.

WEST MICHIGAN ACADEMY OF ARTS AND ACADEMICS

NOTES TO FINANCIAL STATEMENTS - Continued
 FOR THE YEAR ENDED JUNE 30, 2015
 See Independent Auditor's Report

NOTE 6 - ACCRUED EXPENSES

Accrued expenses may be summarized as follows:

	<u>Net Position</u>	<u>Funds</u>
Purchased services - payroll and benefits	\$ 243,239	\$ 243,239
Oversight and management fee	17,407	17,407
Other	<u>63,188</u>	<u>-</u>
Total accrued expenses	<u>\$ 323,834</u>	<u>\$ 260,646</u>

NOTE 7 - LONG-TERM OBLIGATIONS PAYABLE

Long-term obligations as of June 30, 2015 can be summarized as follows:

Loan Information

	<u>Interest Rate</u>	<u>Maturity Date</u>	<u>Other</u>
Facilities loan	3.39%	August, 2019	Secured by building
Revenue bond	5% Average	April, 2043	Semi-annual interest payments, collateralized by pledge for state aid

Loan Activity

	<u>Balance July 1, 2014</u>	<u>Additions</u>	<u>Retirements and Payments</u>	<u>Balance June 30, 2015</u>	<u>Due Within One Year</u>
Facilities loan	\$ -	\$ 300,000	\$ 46,613	\$ 253,387	\$ 57,695
Revenue bond	<u>4,910,000</u>	<u>-</u>	<u>80,000</u>	4,830,000	<u>85,000</u>
	<u>\$ 4,910,000</u>	<u>\$ 300,000</u>	<u>\$ 126,613</u>	\$ 5,083,387	<u>\$ 142,695</u>
Less unamortized discount				<u>130,009</u>	
				<u>\$ 4,953,378</u>	

WEST MICHIGAN ACADEMY OF ARTS AND ACADEMICS

NOTES TO FINANCIAL STATEMENTS - Continued
 FOR THE YEAR ENDED JUNE 30, 2015
 See Independent Auditor's Report

NOTE 7 - LONG-TERM OBLIGATIONS PAYABLE - Continued

Following are maturities of long-term obligations for principal and interest for the next five years and in total:

	<u>Principal</u>	<u>Interest</u>
2016	\$ 142,695	\$ 255,764
2017	149,681	249,846
2018	151,736	243,629
2019	158,862	237,341
2020	110,413	231,459
2021 - 2025	575,000	1,082,775
2026 - 2030	730,000	930,013
2031 - 2035	940,000	721,800
2036 - 2040	1,220,000	440,475
2041 - 2043	905,000	90,898

NOTE 8 - RETIREMENT PLAN

All leased employees of the Academy are eligible to participate in a retirement plan established by HRES which qualifies under the provisions of Section 401(k) of the Internal Revenue Code. The Academy contributes 3% of eligible employees salary and will match up to 4% of employee contributed funds. Eligible employees may contribute up to 15% of their salaries under the terms of this plan.

NOTE 9 – INTERFUND TRANSFERS

During the normal course of the school year, the Academy transferred amounts between its funds as follows:

	<u>General</u>	<u>Debt Service</u>	<u>Capital Projets</u>
Transfer In	\$ -	\$ 339,114	\$ -
Transfer Out	337,365	-	1,749

WEST MICHIGAN ACADEMY OF ARTS AND ACADEMICS

NOTES TO FINANCIAL STATEMENTS - Continued
FOR THE YEAR ENDED JUNE 30, 2015
See Independent Auditor's Report

NOTE 9 – INTERFUND TRANSFERS - Continued

As stipulated by the Academy's revenue bond agreement which is described in Note 7, the Academy must transfer 20% of its state aid to a trustee. The trustee retains the required portion for debt service and returns the remainder to the Academy. A portion of the bond proceeds were also transferred to the Capital Projects Fund in order to account for the construction on the building. The above transactions account for the major activity in the Academy's interfund transfer accounts.

NOTE 10 - RISK MANAGEMENT

The Academy is exposed to various risks of loss related to property loss, torts, errors and omissions and employee injuries (worker's compensation), as well as medical benefits provided to employees. The Academy has purchased commercial insurance for all claims. Settled claims relating to the commercial insurance have not exceeded the amount of insurance coverage in any of the past three fiscal years.

SUPPLEMENTAL INFORMATION

WEST MICHIGAN ACADEMY OF ARTS AND ACADEMICS

REQUIRED SUPPLEMENTAL INFORMATION
 BUDGETARY COMPARISON SCHEDULE – GENERAL FUND
 FOR THE YEAR ENDED JUNE 30, 2015
 See Independent Auditor’s Report

	<u>Original Budget</u>	<u>Final Budget</u>	<u>Actual</u>	<u>Variance</u>
Revenues				
Local sources	\$ 88,225	\$ 155,960	\$ 158,508	\$ 2,548
State sources	3,511,063	3,369,105	3,369,999	894
Federal sources	123,558	131,500	131,469	(31)
Interdistrict sources	150,000	298,796	297,069	(1,727)
Total governmental fund revenues	3,872,846	3,955,361	3,957,045	1,684
Expenditures				
Instruction				
Basic programs	1,955,351	1,922,711	1,848,008	(74,703)
Added needs	330,410	268,304	261,118	(7,186)
Support services				
Pupil support services	115,020	148,874	149,854	980
Instructional staff support services	75,158	57,998	53,657	(4,341)
General administration	236,539	228,674	226,817	(1,857)
School administration	534,161	509,537	497,814	(11,723)
Business support services	33,351	27,637	26,622	(1,015)
Operations and maintenance	202,922	266,657	253,053	(13,604)
Pupil transportation services	26,642	24,217	20,496	(3,721)
Central support services	2,500	1,762	1,731	(31)
Community services	60,381	64,101	63,935	(166)
Capital outlay	943,715	1,002,059	1,002,059	-
Debt principal and interest	59,950	59,950	54,495	(5,455)
Total governmental fund expenditures	4,576,100	4,582,481	4,459,659	(122,822)
Excess (deficiency) of revenues over expenditures	(703,254)	(627,120)	(502,614)	124,506
Other Financing Sources (Uses)				
Proceeds from long-term debt	300,000	300,000	300,000	-
Operating transfers out	(336,450)	(336,344)	(337,365)	(1,021)
Total other financing sources (uses)	(36,450)	(36,344)	(37,365)	(1,021)
Excess (deficiency) of revenues and other financing sources over expenditures and other uses	(739,704)	(663,464)	(539,979)	123,485
Fund balance - July 1, 2014	1,783,227	1,783,227	1,783,227	-
Fund balance - June 30, 2015	\$ 1,043,523	\$ 1,119,763	\$ 1,243,248	\$ 123,485

WEST MICHIGAN ACADEMY OF ARTS AND ACADEMICS

SCHEDULE OF REVENUES – GENERAL FUND FOR THE YEAR ENDED JUNE 30, 2015 See Independent Auditor’s Report

Local Sources

Authorizer grant	\$	11,238
Earnings on investments		734
Other local revenues		<u>146,536</u>
Total local sources		158,508

State Sources

At risk		56,363
Special education		71,630
State aid		<u>3,242,006</u>
Total state sources		3,369,999

Federal Sources

IDEA		83,521
Title I		43,218
Title II A		<u>4,730</u>
Total federal sources		131,469

Interdistrict Sources

		<u>297,069</u>
Total general fund revenues	\$	<u><u>3,957,045</u></u>

WEST MICHIGAN ACADEMY OF ARTS AND ACADEMICS

SCHEDULE OF EXPENDITURES – GENERAL FUND
FOR THE YEAR ENDED JUNE 30, 2015
See Independent Auditor's Report

Basic Programs

Purchased services	\$ 1,762,790
Rentals	11,090
Other purchased services	7,490
Supplies and materials	62,956
Non-depreciable capital assets	994
Other expenditures	2,688
	<hr/>
Total basic programs	1,848,008

Added Needs

Purchased services	257,796
Supplies and materials	3,322
	<hr/>
Total added needs	261,118

Pupil Support Services

Health services	8,058
Psychological services	2,565
Speech pathology and audiology	62,618
Social work services	71,619
Teacher consultant	4,994
	<hr/>
Total pupil support services	149,854

Instructional Staff Support Services

Purchased services	35,574
Repairs and maintenance	2,184
Supplies and materials	1,630
Non-depreciable capital assets	14,269
	<hr/>
Total instructional staff support services	53,657

WEST MICHIGAN ACADEMY OF ARTS AND ACADEMICS

SCHEDULE OF EXPENDITURES – GENERAL FUND - CONTINUED
FOR THE YEAR ENDED JUNE 30, 2015
See Independent Auditor's Report

General Administration

Purchased services	43,952
Management fees	84,569
University oversight	95,255
Other expenditures	3,041

Total general administration 226,817

School Administration

Purchased services	484,255
Supplies and materials	8,033
Non-depreciable capital assets	521
Other expenditures	5,005

Total school administration 497,814

Business Support Services

Purchased services	26,473
Other expenditures	149

Total business support services 26,622

Operations and Maintenance

Purchased services	61,676
Repairs and maintenance	116,668
Supplies and materials	74,709

Total operations and maintenance 253,053

Pupil Transportation Services

Purchased services	4,494
Rentals	14,795
Supplies and materials	1,207

Total pupil transportation services 20,496

WEST MICHIGAN ACADEMY OF ARTS AND ACADEMICS

SCHEDULE OF EXPENDITURES – GENERAL FUND - CONTINUED
FOR THE YEAR ENDED JUNE 30, 2015
See Independent Auditor’s Report

Central Support Services	
Purchased services	1,731
Community Services	
Purchased services	60,314
Supplies and materials	2,616
Other expenditures	<u>1,005</u>
Total community services	63,935
Capital Outlay	1,002,059
Debt Principal and Interest	<u>54,495</u>
Total general fund expenditures	<u><u>\$ 4,459,659</u></u>